

Update for Natalie Richards- 4/4/2013

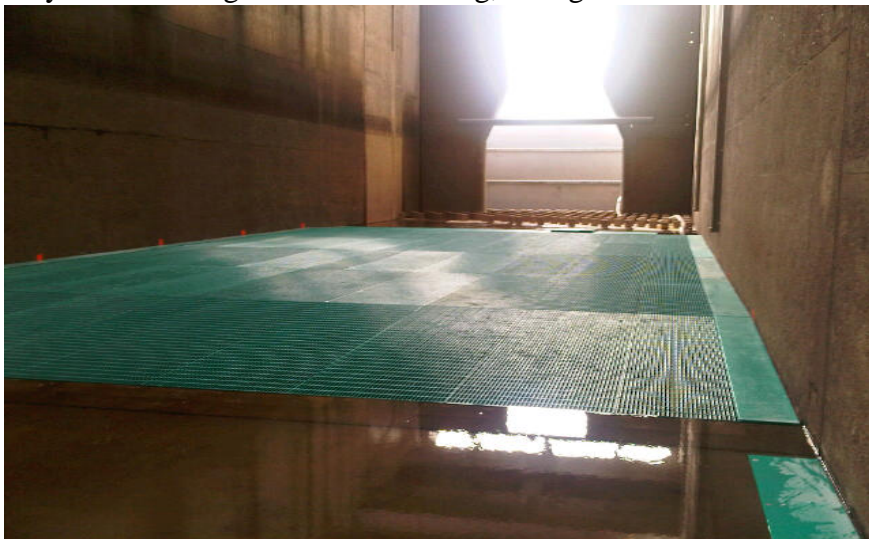
373409-BONN WA Shores-Gravity Flow-Lamprey construction completing U of I flume, weekly updates, installing instrumentation for vertical rod failure assessment



118618-Adult Salmon and Steelhead Studies-scheduling FY13 work-Overwintering Steelhead and Steelhead parity is remaining

138171-John Day North Fish Ladder Entrance

Slayden- Working on Commissioning, lifting beams and Trash rack delivery



Olsson-6 Pumps, Power Controls and Housing- Pumps #1, #6, #2 are meeting ladder criteria, Ktr working on #4 and #3 doweling and #5 lower bearing issue.

353174-TDA PIT Alternatives Study Report-

- TDA-Thin walled antenna field reviewed- couple things needed to make it permanent
- JDA- Thin walled antenna??

393762-Fall Creek Fish Facility-

- BPA, NMFS 90% review until 4/19/2013. Review Meeting 4/10/2013 at NOAA

O&M

354296-Bradford Island Ladder Reliability- DDR starting- Stopping work no funding

- Cascade Island Ladder Reliability - EDR started- Stopping work no dewatering

2406 Program

373284- JDA PH Monolith Drainage issues – 100% DDR waiting for P&S team for implementation

BON WA Shore Lamprey Flume System PDT (PM – Richards, TL – Welton)

- LFS construction is complete; U of I wrapping up completion of the LPS and holding tank.
- U of I (Boise) worked up a screening solution to meet NOAA criteria for the two LPS pumps.

JDA North Ladder Improvements PDT (PM – Richards, TL – Hamernik)

- Construction was completed in mid-March; Ladder is in full operation.
- Work continues on the new pumps. N. Richards should have an update on this.

JDA South Count Station Lamprey Collection Structure PDT (PM – Medina, TL – Welton)

- Construction was completed in February, with the exception of the jib crane/hoist that will be used to lift the lamprey trap in and out of the water.
- Jib crane is on order and will be delivered for installation in April. I will set up an FPOM site visit as soon as I have confirmation that the crane is in place and is ready for operation (probably May, given the delays). The purpose of the visit will be to see how the trap operates and to discuss appropriate times of day to operate.
- Per our discussion at FPOM, fish managers can expect tribal staff to operate the trap daily from about late June/early July through September. The trap will be hoisted in and out of the fishway (area behind picket leads); I expect this operation to take about 5-10 minutes in total (per day). This depends on how quickly tribal staff can lift the trap, empty lamprey into their transport tanks, and drop the tank back in place.

TDA East Ladder AWS Backup PDT (PM – Medina, TL – Lee)

- The NWW PDT drafted a 30% DDR and comments are due April 2.
- Brad Trumbo led a 30% DDR review meeting at NOAA on March 26. The biological section of the report was largely copied from the EDR/alternatives report and needs revision to better explain the rationale behind the proposed design. Trumbo and I will work on this for the 60% draft.

Lamprey Minor Fishway Modifications PDT (PM – ^{Amy}Gibbons, TL – Yazdani)

- The PDT had site visits to The Dalles and Bonneville dams in the past month to scope out and discuss potential minor fishway mods, ladder maintenance schedules, etc. The purpose of this project is to complete many of the “hopper list” (relatively low risk, low cost) modifications that have been listed for each dam.
- The original charter for this project suggested installation of diffuser plating at The Dalles and John Day in the first year (pending hydraulic review). This was based on ladder availability, etc.
- Following the site visits, discussions of the recent U of I adult lamprey passage synthesis report, and considering the amount of design and contracting time remaining in the current fiscal year, the PDT recommends focusing on BON Bradford Island Fish Ladder (B-Branch):